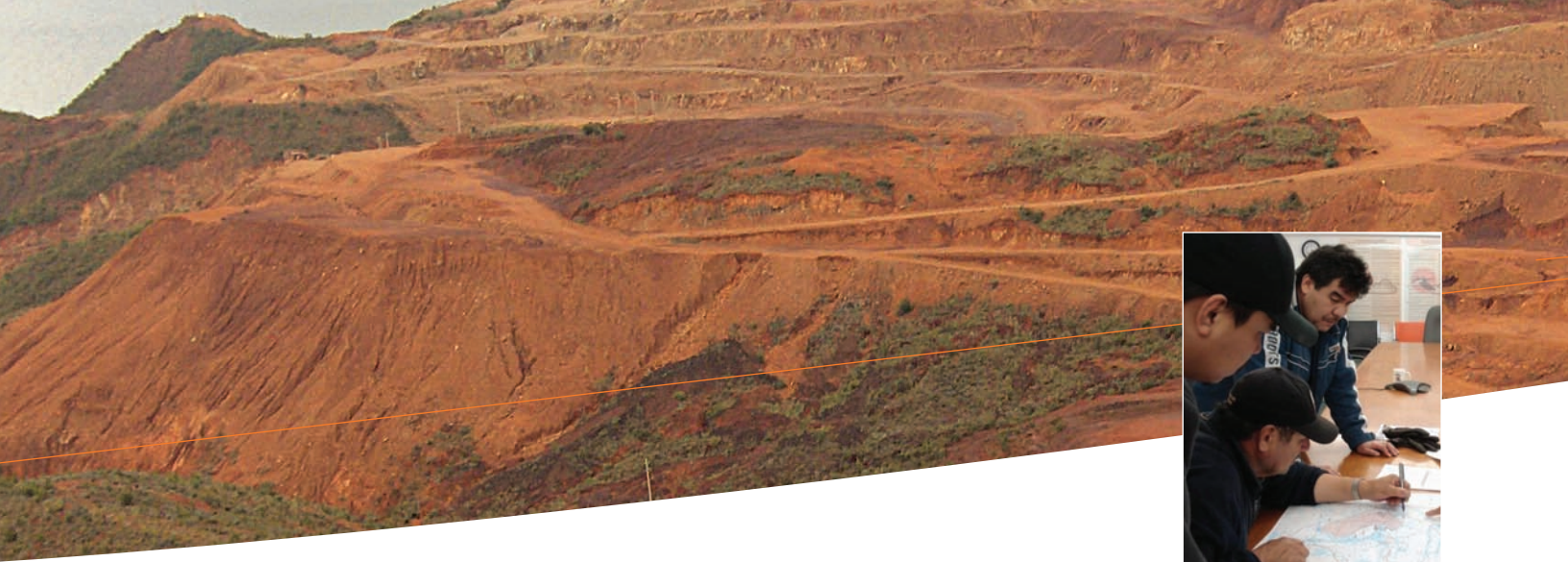




# Mining environment





## MINING ENVIRONMENT

Environmental management in the mining industry is a sphere within itself. As opposed to most industrial projects, the mining operator has no choice about location. In numerous cases, there are major environmental constraints. As well, environmental regulations are in constant evolution rendering the authorization process even more complex. Our role is to assist the mining developers through the maze of regulations.

We offer simple, innovative and cost effective solutions in order to meet environmental objectives. We intercede directly with the authorities in order to ensure the relevance of specific forced requirements. We take the client's interests to heart as well as the protection of the environment. We improve the chances of success and sustainability of projects by directing our customers towards solutions that are better suited to their individual needs and we also take into account technical constraints and regulation requirements, as well as socio-economic environmental conditions.

## SERVICES

For more than two decades, Roche has had on hand a team of specialists who offer services in realms such as development, management and environmental regulation for the mining industry.

Keys services offered are within the following realms:

- Habitat development and offset
- Opportunity and risk analysis
- Soil characterization
- Design of storage facilities for mine tailings
- Strategic guidance in environment
- Applications for classified facility licenses
- Environmental baseline studies
- Economical spin-off assessment
- Environmental and social impact assessment
- Market research (industrial minerals)
- Technical/economical surveys (scoping, feasibility)
- Water treatment and management
- Biophysical and socio-economical surveys
- Securing environmental certificates of authorisation
- Forest intervention permits
- Environmental management plan
- Environmental monitoring and surveillance program
- Planning and participation in public consultation process
- Mine planning
- Preparation of closure and rehabilitation programs
- Compliance audit and environmental audits

## ACHIEVEMENTS

Roche has acquired an excellent reputation in the mining industry, in Canada and abroad. We have brought to completion more than a hundred projects which called out for an integrated approach to problems, specifically inherent to the mining industry. These projects included, among others, environmental baseline studies, environmental and social impact assessment, monitoring and surveillance programs, environmental management plans, scoping and feasibility studies, technical assistance services, resources assessments and setting up of investment programs.

Natural resources in Northern Quebec have also generated important exploration work where Roche has supplied technical support during the last few years. Our northern environment experts have mastered the logistics difficulties and specificities of the northern environment. Our knowledge of the James Bay and Northern Quebec agreement, as well as knowledge of the regulation requirements for this territory, has allowed us to pave the way for an easier project appraisal and clearance process.

This constant link with the mining industry has enabled Roche to familiarize itself with the environmental stakes which come into play when dealing with exploration and extracting mineral resources.

This knowledge is not only theoretical, but practical as well and in keeping with real problems brought about by the mining industry in Quebec, Canada and elsewhere in the world.

Roche has successfully completed environmental studies for major mining projects, some of which concern sensitive and/or inhabited areas.



## ACHIEVEMENTS



**ENVIRONMENT AND SOCIAL IMPACT ASSESSMENT OF THE KONIAMBO PROJECT (NEW CALEDONIA)**



**ENVIRONMENTAL BASELINE STUDY – GOLD MINE PROJECT - ÉLÉONORE PROPERTY**



**ENVIRONMENTAL BASELINE STUDY– FOXTROT DIAMOND PROPERTY**



**ENVIRONMENTAL BASELINE STUDY, PERMITTING AND IMPACT ASSESSMENT, LAC ROCHER PROPERTY, JAMES BAY**



**ENVIRONMENT IMPACT ASSESSMENT FOR RAGLAN MINING PROJECT**



**ENVIRONMENTAL BASELINE STUDY – BÉLANGER AND BRAVO PROPERTIES NUNAVIK**

## PROFILE

Drawing on the knowledge and professionalism of its 1,500 employees, Roche Ltd, Consulting Group is now a major Canadian engineering-construction firm that was founded in La Malbaie, Quebec, in 1963. Its operations extend beyond Quebec's boundaries into Canada and more than 50 countries worldwide.

## VISION

Perform exemplary work, committing to excellence and integrity for the benefit of our clients and employees.

## MISSION

Implement innovative solutions in keeping with our clients' individual needs.

## SUSTAINABLE DEVELOPMENT

Roche incorporates the principles of sustainable development into its engineering-construction projects while taking social, economic and environmental issues into consideration.

## QUALITY POLICY

Roche management and employees are committed to making our firm a leader when it comes to the quality of the professional services we deliver.

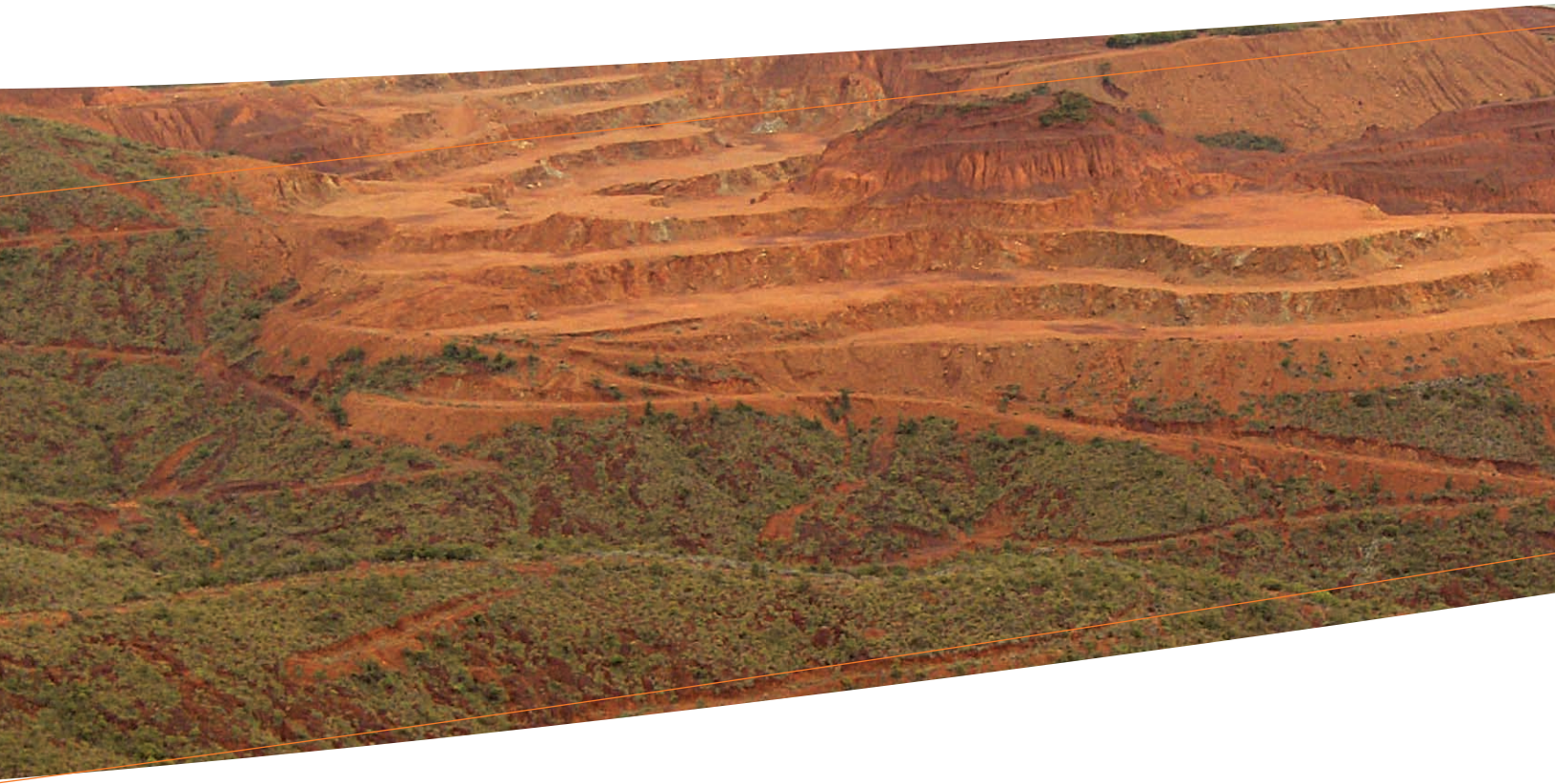
Integrity, excellence, commitment and entrepreneurship are the values upon which this promise is founded.

## FIELDS OF EXPERTISE

- Architectural lighting
- Building
- Construction
- Energy
- Environment
- Forestry
- Health and safety
- Industrial
- International
- Mining environment
- Mining and ore processing
- Municipal infrastructure
- Real estate appraisal & Assessment
- Real estate
- Structural
- Transportation
- Urban planning and landscape architecture



Managing your project as our own



Managing your  
project as our own

[www.roche.ca](http://www.roche.ca)

